

# PEAK VENUES

est. 2006

## Dale House...

This exquisitely designed spacious stone farmhouse has enjoyed a full renovation and provides a feel of modern rusticity blended with beautiful original features. Self cater or reward your team with a visit to the lovely village pub, a five minute stroll away.

### At a Glance...

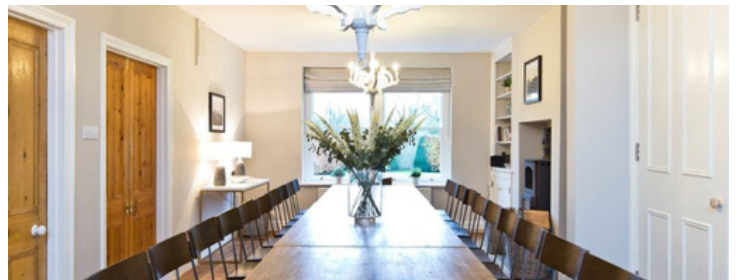
- Hire this stylish country house for your exclusive use.
- Great village location for walking, biking and outdoor pursuits from your doorstep.
- A total of 12 bedrooms and 12 bathrooms or en suites
- Two dwellings in total. The main farmhouse (10 bedrooms) with a converted barn (2 bedrooms) in the garden.
- Meeting space in the large dining room with wall mounted 72 inch HDMI TV
- Two gorgeous break out spaces in the luxury sitting rooms both with log burners
- Fabulous Games room in a separate barn
- Catering packages can be arranged
- Fully set up and equipped for selfcatering
- Outdoor seating and a BBQ with garden views.
- Optional catering and team building activities can be arranged both on or off site
- Full venue details available [here](#)

### Perfect For...

- Meetings in a less formal environment in a rural village setting
- Good location for the adventurous – to inspire you team abseil from the nearby viaduct!
- A healthy mix of team building and business can be achieved
- Flexibility with breakout rooms and meeting spaces in lounges and dining rooms
- High ratio of 'hotel' designed luxury bedrooms and bathrooms/ensuites
- Designing your own stay with our optional additional services

### Location...

- Dale House, Litton, Nr Buxton, Derbyshire, SK17 8QN
- Approximate GPS coordinates: 53.271106, -1.762168
- What3words: ///ripe.advancing.tempting



### Transport Links...

#### Train

**Chesterfield** (direct trains from London 1hr.45 ) 13.9 miles (30 mins drive)

**Buxton** (direct trains from Manchester) 11.8 miles (15 mins drive)

**Macclesfield** (direct trains from London, Leeds, & Birmingham 1hr.45 ) 16.7 miles (35 mins drive)

#### Airport

**Manchester Airport** (33 miles) 1 hrs 10 mins drive time.

**East Midlands** (50 miles) approx 1hr 10mins mins drive time

**Birmingham** (70 miles) 1 hr 45 mins drive time

#### Capacity

12 GUESTS SINGLE ROOM OR 24 IN SHARED ROOMS

#### Bedrooms

12 BEDROOMS WITH TWIN OR DOUBLE

#### Bathrooms

9 ENSUITE & 3 PRIVATE BATHROOMS

#### Meeting Space

UP TO 24 DELEGATES WITH DINING ROOM & 2 LOUNGES

#### Hire Includes

LINEN, TOWELS, PARKING, WIFI, FLIP CHARTS & PAPER