

PEAK VENUES

Specialists in Large Group Accommodation

The Telephone Exchange:

Having been cleverly transformed from a former repeater station to achieve a truly individual and contemporary country retreat, The Telephone Exchange works brilliantly for the smaller meeting or training sessions. The location is amazing for team building as it is situated right on a of road walking/cycling trail and is within a 2 miles down the trail to the award winning Royal Oak .

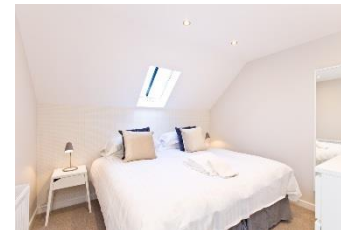
At A Glance:

- Nine modern en suite bedrooms.
- Exclusive use option
- Furnished with beautiful designer sofas and a wall mounted log burner for more informal meetings
- Fabulous dining space with table to seat up to 24 board room style or move the tables and use the flexible space accordingly.
- Catering packages can be arranged
- Fully set up and equipped for self catering in the stunning modern kitchen
- Outdoor seating and a BBQ.
- Within a 2 minute walk to a cycle hire (you can cycle all the way to Ashbourne) – great for a team activity.
- Optional team building activities can be arranged both on or off site.
- Full details, more photos and floor plans can be seen on www.peakvenues.co.uk.

Perfect for:

- Stunning location with easy walks on the Tissington and High Peak Trail and 2 miles to our country pub The Royal Oak
- A healthy mix of team building and business can be achieved
- Brilliant for the smaller meeting in the contemporary open plan downstairs living space
- High ratio of bedrooms and bathrooms
- Very cost effective for smaller, more informal groups
- Designing your own stay with our optional additional services

Capacity	Bedrooms	Bathrooms	Meeting Space	Hire Includes
9 guests in single rooms & 18 in shared rooms	9 bedrooms all can be Twins or doubles	9 en suite or private bathrooms	Perfect for up to 18 delegates either board room informal	Linen, towels, parking, wifi, flip charts & paper



Location:

The Telephone Exchange, Parsley Hay, Derbyshire, SK17 0DG
Approximately GPS coordinates: 53.169106, -1.780140

Train

Chesterfield (direct trains from London 1hr.45) 17.9 miles (35 mins drive).

Buxton (direct trains from Manchester) 9.6 miles (15 mins drive)

Macclesfield (direct trains from London 1hr.45) 18.7 miles (35 mins drive)

Airport

Manchester Airport (32 miles) 1 hrs 10 mins drive time.

East Midlands (45 miles) approx 1hr 10mins mins drive time

Birmingham (63 miles) 1 hr 40 mins drive time